

Acta Crystallographica Section E

Structure Reports

Online

ISSN 1600-5368

N-(Adamantan-1-yl)-2-chloroacetamide

Oluseye K. Onajole,^a Thavendran Govender,^b Hendrik G. Kruger^a and Glenn E. M. Maguire^{a*}

^aSchool of Chemistry, University of KwaZulu–Natal, Durban 4000, South Africa, and

^bSchool of Pharmacy and Pharmacology, University of KwaZulu–Natal, Durban 4000, South Africa

Correspondence e-mail: maguireg@ukzn.ac.za

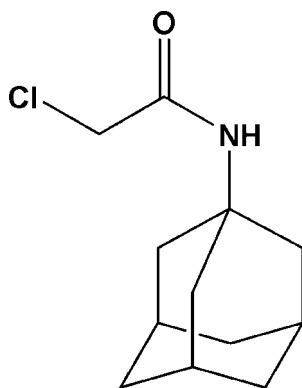
Received 18 March 2011; accepted 12 May 2011

Key indicators: single-crystal X-ray study; $T = 173$ K; mean $\sigma(\text{C}–\text{C}) = 0.002$ Å; R factor = 0.037; wR factor = 0.106; data-to-parameter ratio = 21.9.

In the title compound, $\text{C}_{12}\text{H}_{18}\text{ClNO}$, which was synthesized as part of a study into potential antituberculosis agents, the adamantane skeleton displays shorter than normal C–C bond lengths ranging between 1.5293 (18) and 1.5366 (15) Å. The structure also displays intermolecular N–H···O hydrogen bonding, which forms an infinite chain in the a -axis direction.

Related literature

For background to the title compound, see: Plakhotnik *et al.* (1982). For the synthesis of the title compound, see: Lee *et al.* (2003); Bogatcheva *et al.* (2006, 2010); Onajole *et al.* (2010). For related polycyclic structures, see: Venkataramanan *et al.* (2004); Fokin *et al.*, (2009).



Experimental

Crystal data

$\text{C}_{12}\text{H}_{18}\text{ClNO}$
 $M_r = 227.72$
 Orthorhombic, $Pbca$
 $a = 9.3656$ (2) Å

$b = 13.7515$ (3) Å
 $c = 18.7917$ (4) Å
 $V = 2420.20$ (9) Å³
 $Z = 8$

Mo $K\alpha$ radiation
 $\mu = 0.29$ mm⁻¹

$T = 173$ K
 $0.26 \times 0.16 \times 0.15$ mm

Data collection

Nonius KappaCCD diffractometer
 Absorption correction: multi-scan
 (SADABS; Sheldrick, 1996)
 $T_{\min} = 0.928$, $T_{\max} = 0.958$

5629 measured reflections
 3003 independent reflections
 2568 reflections with $I > 2\sigma(I)$
 $R_{\text{int}} = 0.007$

Refinement

$R[F^2 > 2\sigma(F^2)] = 0.037$
 $wR(F^2) = 0.106$
 $S = 1.05$
 3003 reflections

137 parameters
 H-atom parameters constrained
 $\Delta\rho_{\max} = 0.26$ e Å⁻³
 $\Delta\rho_{\min} = -0.33$ e Å⁻³

Table 1

Hydrogen-bond geometry (Å, °).

| $D–H\cdots A$ | $D–H$ | $H\cdots A$ | $D\cdots A$ | $D–H\cdots A$ |
|--|-------|-------------|-------------|---------------|
| $\text{N1}–\text{H1}\cdots\text{O1}^i$ | 0.88 | 1.97 | 2.8301 (12) | 165 |

Symmetry code: (i) $x + \frac{1}{2}, y, -z + \frac{1}{2}$.

Data collection: COLLECT (Nonius, 2000); cell refinement: DENZO-SMN; data reduction: DENZO-SMN (Otwinowski & Minor, 1997); program(s) used to solve structure: SHELXS97 (Sheldrick, 2008); program(s) used to refine structure: SHELXL97 (Sheldrick, 2008); molecular graphics: OLEX2 (Dolomanov *et al.*, 2009); software used to prepare material for publication: SHELXL97.

The authors thank Dr Hong Su of the Chemistry Department of the University of Cape Town for her assistance with the crystallographic data collection.

Supplementary data and figures for this paper are available from the IUCr electronic archives (Reference: NK2092).

References

- Bogatcheva, E., Hanrahan, C., Chen, P., Gearhart, J., Sacksteder, K., Einck, L., Nacy, C. & Protopopova, M. (2010). *Bioorg. Med. Chem. Lett.* **20**, 201–205.
- Bogatcheva, E., Hanrahan, C., Nikonenko, B., Samala, R., Chen, P., Gearhart, J., Barbosa, F., Einck, L., Nacy, C. A. & Protopopova, M. (2006). *J. Med. Chem.* **49**, 3045–3048.
- Dolomanov, O. V., Bourhis, L. J., Gildea, R. J., Howard, J. A. K. & Puschmann, H. (2009). *J. Appl. Cryst.* **42**, 339–341.
- Fokin, A. A., Merz, A., Fokina, N. A., Schwertfeger, H., Liu, S. L., Dahl, J. E. P., Carlson, R. K. M. & Schreiner, P. R. (2009). *Synthesis*, **6**, 909–912.
- Lee, R. E., Protopopova, M., Crooks, E., Slayden, R. A., Terrot, M. & Barry, C. E. J. (2003). *J. Comb. Chem.* **5**, 172–187.
- Nonius (2000). COLLECT. Nonius BV, Delft, The Netherlands.
- Onajole, O. K., van Govender, P., Heiden, P. D., Kruger, H. G., Maguire, G. E. M., Wiid, I. & Govender, T. (2010). *Eur. J. Med. Chem.* **45**, 2075–2079.
- Otwinowski, Z. & Minor, W. (1997). *Methods in Enzymology*, Vol. 276, *Macromolecular Crystallography*, Part A, edited by C. W. Carter Jr & R. M. Sweet, pp. 307–326. New York: Academic Press.
- Plakhotnik, V. M., Kovtun, V. Y. & Yashunskii, V. G. (1982). *Zh. Org. Khim.* **18**, 1001–1005.
- Sheldrick, G. M. (1996). SADABS. University of Göttingen, Germany.
- Sheldrick, G. M. (2008). *Acta Cryst.* **A64**, 112–122.
- Venkataramanan, B., Saifudin, M.-A., Jagadese, J. V. & Suresh, V. (2004). *CrystEngComm*, **6**, 284–289.

supplementary materials

Acta Cryst. (2011). E67, o1444 [doi:10.1107/S1600536811018046]

***N*-(Adamantan-1-yl)-2-chloroacetamide**

O. K. Onajole, T. Govender, H. G. Kruger and G. E. M. Maguire

Comment

As part of an ongoing study into the anti-tuberculosis activity of adamantane derivatives (Lee *et al.*, 2003, Bogatcheva *et al.*, 2006, 2010, Onajole *et al.*, 2010), the title compound, an adamantane derivative, serves as a precursor in the synthesis of potential anti-tuberculosis agents (Onajole *et al.* 2010). Although, the compound is known (Plakhotnik *et al.*, 1982), its crystal structure has not been reported.

The molecule displays a number of C—C bond lengths that are shorter than the expected bond length of 1.54 Å. These bonds range between 1.5293 (18) Å for C6—C7 to 1.5366 (16) for C1—C2 in the adamantane skeleton (Fig. 1). The structure exhibits intermolecular hydrogen bonding between N1 and O1 of adjacent molecules, which forms an infinite chain in the *a*-axis direction. The isopropyl (Venkataramanan *et al.*, 2004) amide derivative has a similar bonding arrangement in its structure. Interestingly, the structure report for the bicyclic analogue of the title compound (Fokin *et al.*, 2009) reveals no N—H···O hydrogen bonding in the crystal lattice.

Experimental

Amantadine.HCl (4 g, 26.5 mmol) was dissolved in dichloromethane (40 ml). To this solution was slowly added chloroacetyl chloride (2.987 g, 26.5 mmol) after which the reaction was refluxed gently for 2 h. The reaction mixture was filtered and the resultant solution was concentrated *in vacuo*. The crude product was purified on silica gel using dichloromethane:ethyl acetate (7:3) as eluent to give the title compound (6.52 g, 89%) as a white crystalline solid. Crystals suitable for X-ray analysis were grown in methanol at room temperature. Melting point: 357–359 K.

Refinement

X-ray single-crystal intensity data were collected on a Nonius Kappa-CCD diffractometer using graphite monochromated MoK α radiation ($\lambda = 0.71073$ Å). Temperature was controlled by an Oxford Cryostream cooling system (Oxford Cryostat). The strategy for the data collections was evaluated using the Bruker Nonius "Collect" program (Nonius, 2000). Data were scaled and reduced using *DENZO-SMN* software (Otwinowski & Minor, 1997). Absorption corrections were performed using *SADABS* (Sheldrick, 2008). The structure was solved by direct methods and refined employing full-matrix least-squares with the program *SHELXL97* (Sheldrick, 2008) refining on F^2 . All non-hydrogen atoms were refined anisotropically. All hydrogen atoms were placed in idealized positions in a riding model with U_{iso} set at 1.2 times those of their parent atoms and refined with simple bond length constraints (*e.g.* 0.88 Å for N—H and others 0.99 Å).

Figures

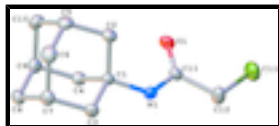


Fig. 1. Molecular structure of the title compound with displacement ellipsoids at the 40% probability level and all hydrogen atoms omitted for clarity. All non-hydrogen atoms are shown as ellipsoids with probability level of 40%.

N-(Adamantan-1-yl)-2-chloroacetamide

Crystal data

$C_{12}H_{18}ClNO$

$M_r = 227.72$

Orthorhombic, *Pbca*

Hall symbol: -P 2ac 2ab

$a = 9.3656$ (2) Å

$b = 13.7515$ (3) Å

$c = 18.7917$ (4) Å

$V = 2420.20$ (9) Å³

$Z = 8$

$F(000) = 976$

$D_x = 1.250$ Mg m⁻³

Mo $K\alpha$ radiation, $\lambda = 0.71073$ Å

Cell parameters from 5629 reflections

$\theta = 3.0$ – 28.3°

$\mu = 0.29$ mm⁻¹

$T = 173$ K

Block, colourless

$0.26 \times 0.16 \times 0.15$ mm

Data collection

Nonius KappaCCD
diffractometer

Radiation source: fine-focus sealed tube
graphite

1.2° φ scans and ω scans

Absorption correction: multi-scan
(*SADABS*; Sheldrick, 1996)

$T_{\min} = 0.928$, $T_{\max} = 0.958$

5629 measured reflections

3003 independent reflections

2568 reflections with $I > 2\sigma(I)$

$R_{\text{int}} = 0.007$

$\theta_{\max} = 28.3^\circ$, $\theta_{\min} = 3.0^\circ$

$h = -12 \rightarrow 12$

$k = -18 \rightarrow 18$

$l = -24 \rightarrow 25$

Refinement

Refinement on F^2

Least-squares matrix: full

$R[F^2 > 2\sigma(F^2)] = 0.037$

$wR(F^2) = 0.106$

$S = 1.05$

3003 reflections

137 parameters

0 restraints

Secondary atom site location: difference Fourier map

Hydrogen site location: inferred from neighbouring sites

H-atom parameters constrained

$w = 1/[\sigma^2(F_o^2) + (0.058P)^2 + 0.664P]$

where $P = (F_o^2 + 2F_c^2)/3$

$(\Delta/\sigma)_{\max} = 0.001$

$\Delta\rho_{\max} = 0.26$ e Å⁻³

$\Delta\rho_{\min} = -0.33$ e Å⁻³

Extinction correction: *SHELXL97* (Sheldrick, 2008),

$F_c^* = kFc[1 + 0.001xFc^2\lambda^3/\sin(2\theta)]^{-1/4}$

Primary atom site location: structure-invariant direct methods Extinction coefficient: 0.0078 (14)

Special details

Experimental. X-ray single-crystal intensity data were collected on a Nonius Kappa-CCD diffractometer using graphite monochromated MoK α radiation ($\lambda = 0.71073 \text{ \AA}$). Temperature was controlled by an Oxford Cryostream cooling system (Oxford Cryostat). The strategy for the data collections was evaluated using the Bruker Nonius "Collect" program (Nonius, 2000). Data were scaled and reduced using DENZO-SMN software (Otwinowski & Minor, 1997). Absorption corrections were performed using SADABS (Sheldrick, 2008). The structure was solved by direct methods and refined employing full-matrix least-squares with the program SHELXL97 (Sheldrick, 2008) refining on F^2 . All non-hydrogen atoms were refined anisotropically. Half sphere of data collected using COLLECT strategy (Nonius, 2000). Crystal to detector distance = 30 mm; combination of ϕ and ω scans of 1.0° , 60 s per $^\circ$, 2 iterations.

^1H NMR (CDCl_3 , 600 MHz): δ_{H} 1.64 (m, 6H), 1.96 (m, 6H), 2.04 (s, 3H), 3.87 (s, 2H), 6.19 (s, NH).

^{13}C NMR (CDCl_3 , 100 MHz): δ_{C} 29.3 (CH), 36.1 (CH_2), 41.1 (CH_2), 42.8 (CH_2), 52.3 (C), 164.5 (C=O).

Geometry. All e.s.d.'s (except the e.s.d. in the dihedral angle between two l.s. planes) are estimated using the full covariance matrix. The cell e.s.d.'s are taken into account individually in the estimation of e.s.d.'s in distances, angles and torsion angles; correlations between e.s.d.'s in cell parameters are only used when they are defined by crystal symmetry. An approximate (isotropic) treatment of cell e.s.d.'s is used for estimating e.s.d.'s involving l.s. planes.

Refinement. Refinement of F^2 against ALL reflections. The weighted R -factor wR and goodness of fit S are based on F^2 , conventional R -factors R are based on F , with F set to zero for negative F^2 . The threshold expression of $F^2 > \sigma(F^2)$ is used only for calculating R -factors(gt) etc. and is not relevant to the choice of reflections for refinement. R -factors based on F^2 are statistically about twice as large as those based on F , and R -factors based on ALL data will be even larger.

Fractional atomic coordinates and isotropic or equivalent isotropic displacement parameters (Å^2)

| | <i>x</i> | <i>y</i> | <i>z</i> | $U_{\text{iso}}^*/U_{\text{eq}}$ |
|-----|--------------|-------------|-------------|----------------------------------|
| C11 | 0.14558 (4) | 0.52848 (3) | 0.15642 (2) | 0.04867 (14) |
| O1 | 0.10158 (8) | 0.66702 (7) | 0.27321 (5) | 0.0342 (2) |
| N1 | 0.33518 (9) | 0.70366 (7) | 0.29263 (5) | 0.0280 (2) |
| H1 | 0.4228 | 0.6889 | 0.2797 | 0.034* |
| C1 | 0.31869 (11) | 0.77662 (8) | 0.34943 (6) | 0.0246 (2) |
| C2 | 0.23383 (13) | 0.86513 (9) | 0.32293 (6) | 0.0316 (3) |
| H2A | 0.2809 | 0.8930 | 0.2804 | 0.038* |
| H2B | 0.1361 | 0.8448 | 0.3094 | 0.038* |
| C3 | 0.46993 (11) | 0.80966 (9) | 0.36968 (6) | 0.0304 (3) |
| H3A | 0.5262 | 0.7531 | 0.3863 | 0.037* |
| H3B | 0.5182 | 0.8374 | 0.3274 | 0.037* |
| C4 | 0.24600 (12) | 0.73351 (8) | 0.41519 (6) | 0.0278 (2) |
| H4A | 0.3012 | 0.6769 | 0.4325 | 0.033* |
| H4B | 0.1488 | 0.7110 | 0.4026 | 0.033* |
| C5 | 0.22636 (14) | 0.94200 (9) | 0.38192 (7) | 0.0360 (3) |
| H5 | 0.1710 | 0.9995 | 0.3645 | 0.043* |
| C6 | 0.37733 (15) | 0.97414 (9) | 0.40223 (8) | 0.0398 (3) |
| H6A | 0.4255 | 1.0029 | 0.3603 | 0.048* |
| H6B | 0.3726 | 1.0242 | 0.4400 | 0.048* |

supplementary materials

| | | | | |
|------|--------------|--------------|-------------|------------|
| C7 | 0.46230 (12) | 0.88638 (9) | 0.42878 (7) | 0.0333 (3) |
| H7 | 0.5611 | 0.9074 | 0.4418 | 0.040* |
| C8 | 0.38820 (13) | 0.84361 (10) | 0.49427 (6) | 0.0343 (3) |
| H8A | 0.3833 | 0.8931 | 0.5324 | 0.041* |
| H8B | 0.4434 | 0.7874 | 0.5123 | 0.041* |
| C9 | 0.23705 (13) | 0.81098 (9) | 0.47388 (6) | 0.0316 (3) |
| H9 | 0.1886 | 0.7827 | 0.5166 | 0.038* |
| C10 | 0.15142 (13) | 0.89847 (10) | 0.44707 (7) | 0.0369 (3) |
| H10A | 0.1442 | 0.9480 | 0.4851 | 0.044* |
| H10B | 0.0536 | 0.8777 | 0.4341 | 0.044* |
| C11 | 0.22906 (11) | 0.65799 (8) | 0.25909 (6) | 0.0275 (2) |
| C12 | 0.28360 (14) | 0.59104 (11) | 0.20014 (7) | 0.0417 (3) |
| H12A | 0.3506 | 0.5432 | 0.2210 | 0.050* |
| H12B | 0.3370 | 0.6302 | 0.1649 | 0.050* |

Atomic displacement parameters (\AA^2)

| | U^{11} | U^{22} | U^{33} | U^{12} | U^{13} | U^{23} |
|-----|------------|------------|------------|---------------|---------------|---------------|
| Cl1 | 0.0435 (2) | 0.0562 (2) | 0.0463 (2) | -0.00949 (15) | -0.01151 (14) | -0.01454 (15) |
| O1 | 0.0177 (4) | 0.0510 (5) | 0.0338 (4) | -0.0016 (3) | -0.0025 (3) | -0.0013 (4) |
| N1 | 0.0165 (4) | 0.0365 (5) | 0.0311 (5) | -0.0006 (3) | 0.0008 (3) | -0.0052 (4) |
| C1 | 0.0186 (4) | 0.0289 (5) | 0.0263 (5) | -0.0003 (4) | -0.0003 (4) | -0.0008 (4) |
| C2 | 0.0311 (6) | 0.0326 (6) | 0.0313 (6) | 0.0019 (5) | -0.0032 (5) | 0.0047 (5) |
| C3 | 0.0196 (5) | 0.0377 (6) | 0.0340 (6) | -0.0036 (4) | -0.0005 (4) | -0.0040 (5) |
| C4 | 0.0259 (5) | 0.0288 (5) | 0.0287 (5) | -0.0026 (4) | 0.0014 (4) | 0.0022 (4) |
| C5 | 0.0370 (6) | 0.0284 (5) | 0.0425 (7) | 0.0061 (5) | -0.0044 (5) | 0.0009 (5) |
| C6 | 0.0448 (7) | 0.0296 (6) | 0.0450 (8) | -0.0077 (5) | 0.0000 (6) | -0.0006 (5) |
| C7 | 0.0251 (5) | 0.0375 (6) | 0.0371 (6) | -0.0067 (5) | -0.0017 (4) | -0.0062 (5) |
| C8 | 0.0338 (6) | 0.0390 (6) | 0.0302 (6) | 0.0002 (5) | -0.0050 (5) | -0.0048 (5) |
| C9 | 0.0297 (5) | 0.0376 (6) | 0.0274 (5) | -0.0026 (5) | 0.0039 (4) | -0.0006 (5) |
| C10 | 0.0291 (6) | 0.0408 (7) | 0.0407 (7) | 0.0054 (5) | 0.0025 (5) | -0.0089 (5) |
| C11 | 0.0211 (5) | 0.0350 (5) | 0.0264 (5) | -0.0015 (4) | -0.0021 (4) | 0.0013 (4) |
| C12 | 0.0292 (6) | 0.0578 (8) | 0.0380 (6) | -0.0083 (6) | 0.0008 (5) | -0.0170 (6) |

Geometric parameters (\AA , $^\circ$)

| | | | |
|---------|-------------|----------|-------------|
| Cl1—C12 | 1.7567 (13) | C5—C10 | 1.5329 (19) |
| O1—C11 | 1.2293 (13) | C5—H5 | 1.0000 |
| N1—C11 | 1.3340 (14) | C6—C7 | 1.5293 (18) |
| N1—C1 | 1.4729 (14) | C6—H6A | 0.9900 |
| N1—H1 | 0.8800 | C6—H6B | 0.9900 |
| C1—C4 | 1.5304 (15) | C7—C8 | 1.5303 (17) |
| C1—C3 | 1.5354 (14) | C7—H7 | 1.0000 |
| C1—C2 | 1.5366 (15) | C8—C9 | 1.5336 (16) |
| C2—C5 | 1.5334 (17) | C8—H8A | 0.9900 |
| C2—H2A | 0.9900 | C8—H8B | 0.9900 |
| C2—H2B | 0.9900 | C9—C10 | 1.5312 (18) |
| C3—C7 | 1.5335 (16) | C9—H9 | 1.0000 |
| C3—H3A | 0.9900 | C10—H10A | 0.9900 |

| | | | |
|--------------|--------------|---------------|-------------|
| C3—H3B | 0.9900 | C10—H10B | 0.9900 |
| C4—C9 | 1.5357 (16) | C11—C12 | 1.5283 (17) |
| C4—H4A | 0.9900 | C12—H12A | 0.9900 |
| C4—H4B | 0.9900 | C12—H12B | 0.9900 |
| C5—C6 | 1.5298 (18) | | |
| C11—N1—C1 | 125.80 (9) | C7—C6—H6B | 109.8 |
| C11—N1—H1 | 117.1 | C5—C6—H6B | 109.8 |
| C1—N1—H1 | 117.1 | H6A—C6—H6B | 108.2 |
| N1—C1—C4 | 111.59 (9) | C6—C7—C8 | 109.25 (10) |
| N1—C1—C3 | 106.53 (9) | C6—C7—C3 | 109.32 (10) |
| C4—C1—C3 | 108.95 (9) | C8—C7—C3 | 109.82 (10) |
| N1—C1—C2 | 111.04 (9) | C6—C7—H7 | 109.5 |
| C4—C1—C2 | 109.78 (9) | C8—C7—H7 | 109.5 |
| C3—C1—C2 | 108.85 (9) | C3—C7—H7 | 109.5 |
| C5—C2—C1 | 109.59 (9) | C7—C8—C9 | 109.28 (10) |
| C5—C2—H2A | 109.8 | C7—C8—H8A | 109.8 |
| C1—C2—H2A | 109.8 | C9—C8—H8A | 109.8 |
| C5—C2—H2B | 109.8 | C7—C8—H8B | 109.8 |
| C1—C2—H2B | 109.8 | C9—C8—H8B | 109.8 |
| H2A—C2—H2B | 108.2 | H8A—C8—H8B | 108.3 |
| C7—C3—C1 | 109.89 (9) | C10—C9—C8 | 109.62 (10) |
| C7—C3—H3A | 109.7 | C10—C9—C4 | 109.71 (10) |
| C1—C3—H3A | 109.7 | C8—C9—C4 | 109.39 (9) |
| C7—C3—H3B | 109.7 | C10—C9—H9 | 109.4 |
| C1—C3—H3B | 109.7 | C8—C9—H9 | 109.4 |
| H3A—C3—H3B | 108.2 | C4—C9—H9 | 109.4 |
| C1—C4—C9 | 109.61 (9) | C9—C10—C5 | 109.26 (10) |
| C1—C4—H4A | 109.7 | C9—C10—H10A | 109.8 |
| C9—C4—H4A | 109.7 | C5—C10—H10A | 109.8 |
| C1—C4—H4B | 109.7 | C9—C10—H10B | 109.8 |
| C9—C4—H4B | 109.7 | C5—C10—H10B | 109.8 |
| H4A—C4—H4B | 108.2 | H10A—C10—H10B | 108.3 |
| C6—C5—C10 | 109.68 (11) | O1—C11—N1 | 125.04 (11) |
| C6—C5—C2 | 109.72 (10) | O1—C11—C12 | 122.81 (10) |
| C10—C5—C2 | 109.21 (10) | N1—C11—C12 | 112.15 (9) |
| C6—C5—H5 | 109.4 | C11—C12—C11 | 112.84 (9) |
| C10—C5—H5 | 109.4 | C11—C12—H12A | 109.0 |
| C2—C5—H5 | 109.4 | C11—C12—H12A | 109.0 |
| C7—C6—C5 | 109.53 (10) | C11—C12—H12B | 109.0 |
| C7—C6—H6A | 109.8 | C11—C12—H12B | 109.0 |
| C5—C6—H6A | 109.8 | H12A—C12—H12B | 107.8 |
| C11—N1—C1—C4 | 62.57 (14) | C5—C6—C7—C3 | 59.83 (13) |
| C11—N1—C1—C3 | -178.63 (11) | C1—C3—C7—C6 | -60.28 (13) |
| C11—N1—C1—C2 | -60.26 (14) | C1—C3—C7—C8 | 59.57 (13) |
| N1—C1—C2—C5 | -176.69 (9) | C6—C7—C8—C9 | 60.43 (13) |
| C4—C1—C2—C5 | 59.45 (12) | C3—C7—C8—C9 | -59.46 (13) |
| C3—C1—C2—C5 | -59.73 (12) | C7—C8—C9—C10 | -60.35 (13) |
| N1—C1—C3—C7 | 179.85 (9) | C7—C8—C9—C4 | 59.99 (13) |

supplementary materials

| | | | |
|--------------|-------------|----------------|-------------|
| C4—C1—C3—C7 | -59.64 (12) | C1—C4—C9—C10 | 59.49 (12) |
| C2—C1—C3—C7 | 60.05 (12) | C1—C4—C9—C8 | -60.79 (12) |
| N1—C1—C4—C9 | 177.60 (9) | C8—C9—C10—C5 | 59.74 (13) |
| C3—C1—C4—C9 | 60.26 (11) | C4—C9—C10—C5 | -60.40 (13) |
| C2—C1—C4—C9 | -58.85 (12) | C6—C5—C10—C9 | -59.57 (13) |
| C1—C2—C5—C6 | 60.02 (13) | C2—C5—C10—C9 | 60.70 (13) |
| C1—C2—C5—C10 | -60.23 (13) | C1—N1—C11—O1 | -3.61 (19) |
| C10—C5—C6—C7 | 60.04 (14) | C1—N1—C11—C12 | 176.78 (10) |
| C2—C5—C6—C7 | -59.92 (14) | O1—C11—C12—C11 | -0.73 (17) |
| C5—C6—C7—C8 | -60.38 (13) | N1—C11—C12—C11 | 178.88 (9) |

Hydrogen-bond geometry (\AA , $^\circ$)

| $D-H\cdots A$ | $D-H$ | $H\cdots A$ | $D\cdots A$ | $D-H\cdots A$ |
|--------------------------------|-------|-------------|-------------|---------------|
| N1—H1 \cdots O1 ⁱ | 0.88 | 1.97 | 2.8301 (12) | 165 |

Symmetry codes: (i) $x+1/2, y, -z+1/2$.

Fig. 1

